

**BUDHA DAL PUBLIC SCHOOL PATIALA**

**Final Examination (28 February 2024)**

**CLASS - VII**

**PAPER- SCIENCE (SET-B)**

**M.M. 80**

**Time:3 hr.**

**General Instructions:**

1. *All questions are compulsory.*
2. *Attempt all questions section wise in the serial order neatly and leave one line after every answer.*
3. *Draw neat and labelled diagrams wherever required.*

**Q1. Multiple Choice Questions : (Choose the correct option)**

**(7×1=7)**

1. Which one of the following countries does not contribute towards silk production?  
a) China    b) India    c) Nepal    d) Japan
2. Which one of the following acids contains nitrogen?  
a) Sulphuric acid ( $H_2SO_4$ )  
b) Hydrochloric acid (HCl)  
c) Acetic acid ( $CH_3COOH$ )  
d) Nitric acid ( $HNO_3$ )
3. Which one of the following plants is propagated by both cutting and layering methods?  
a) bougainvillea    b) mangoes    c) jasmine    d) pear
4. The wire of an electric fuse is an alloy of copper and \_\_\_\_\_.  
a) tin    b) nichrome    c) nickel    d) copper
5. Which one of the following explains the nature of image formed by the side view mirror?  
a) real, erect and larger than the object  
b) virtual, erect and larger than the object  
c) real, erect and smaller than the object  
d) virtual, erect and smaller than the object
6. Which one of the following is a component of industrial waste water, but not domestic waste water?.  
a) arsenic    b) detergent    c) oil and fat    d) faecal matter
7. If a new substance is formed, the change is called \_\_\_\_\_.  
a) Physical    b) chemical    c) neutral    d) mechanical

**Q2. Assertion/ Reason:**

**(1)**

In the following question, two statements are given - one labelled Assertion (A) and other labelled Reason (R). Select correct answer to this question from codes (a), (b), (c) and (d) as given below :

**Assertion (A):** Wool and silk are animal fibres.

**Reason (R):** Wool is obtained from fur of sheep.

- a) Both A and R are true and R is correct explanation of assertion.
- b) Both A and R are true but R is not correct explanation of assertion.
- c) A is true but R is false.
- d) A is false but R is true.

**B-1**



Q3. Answer in one word :

1. Name the stage of caterpillar that is responsible for cocoon formation.
2. How many days does it take to form a cocoon?
3. Which acid is produced in our stomach?
4. Name any one base.
5. In which direction do the trade winds blow?
6. Name the excretory organ of earthworm.
7. Name the scientist who discovered the magnetic effect of current.
8. Name the spherical mirror whose inner side is the reflecting surface.
9. Name any one organic impurity present in sewage.
10. Name the female reproductive organ of the plant.

(7×2=14)

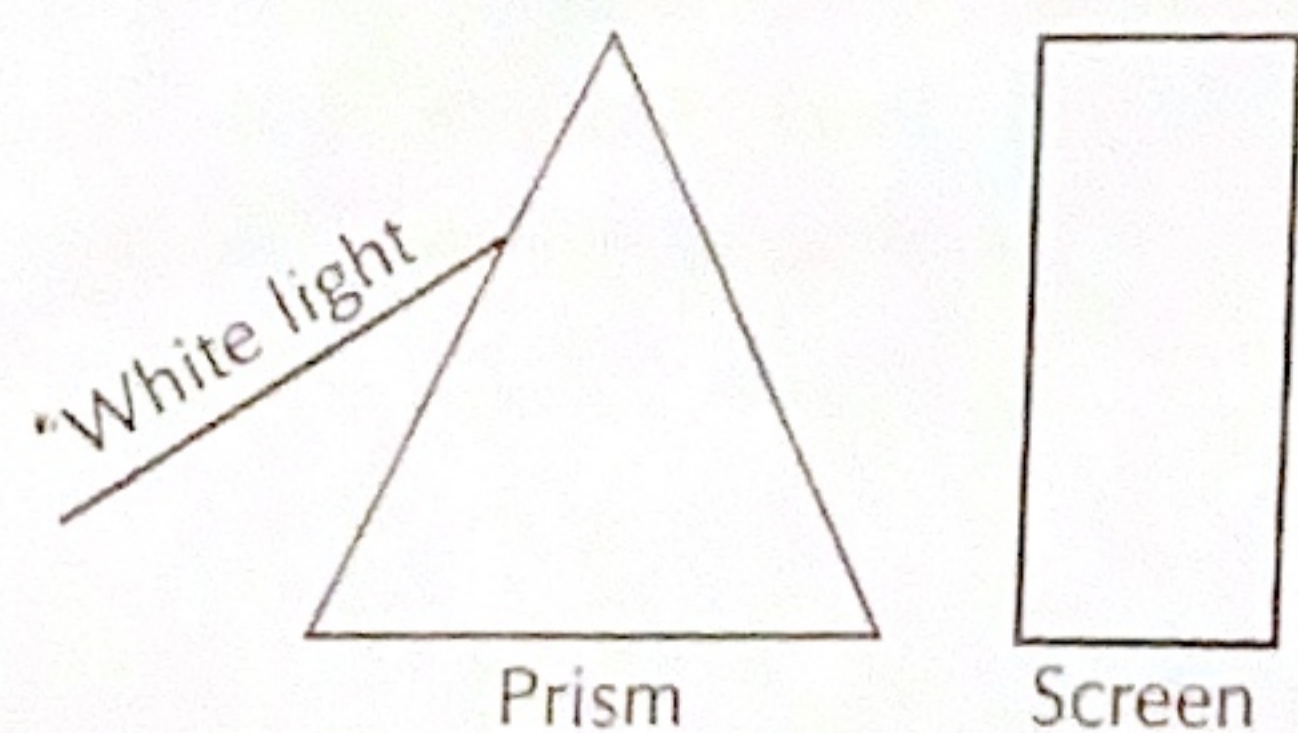
Q4. Short Answer Questions:

1. Why are animal activists against silk production?
2. What are the two stages of cyclone warning?
3. Why does the heart beat faster during and after physical exercise?
4. When current is switched on through a wire, a compass needle kept nearby gets deflected from its north - south position. Explain why does this happen? Give a suitable reason.
5. List two differences between convex and concave mirror.
6. What is a wastewater treatment plant?
7. Why is melting of ice to form water considered a physical change?

(12×3=36)

Q5. Long Answer Questions :

1. Create a flowchart showing various stages of production of woolen fabric.
2. a) What are organic acids?  
b) Name any two organic acids.
3. List three differences between acids and bases.
4. a) What is a cyclone?  
b) List two situations that generate wind currents on earth.
5. After girdling of stem, the portion of plant below the girdled stem dries  
a) Why does this happen?      b) What does this prove?
6. What is dialysis? What type of patients are put on a dialysis machine?
7. How does fertilisation take place in a flower?
8. Differentiate between an electromagnet and a permanent magnet.
9. A student performs an experiment where he allows a white beam of light to pass through a prism as shown in figure below:  
a) What is likely to appear on the screen behind the prism?  
b) Define dispersion of light.





10. Outline the main steps used in sewage treatment.
11. How are copper sulphate crystals prepared?
12. a) Name any two plants that are reproduced by asexual method of reproduction.  
 b) What is asexual reproduction? (1/2 × 4 = 2)

- Q6. Classify the following as physical or chemical changes. (2)
- i) Explosion of fire crackers
  - ii) Change in colour of cut fruit
  - iii) Clothes being ironed
  - iv) Burning of petrol (5)

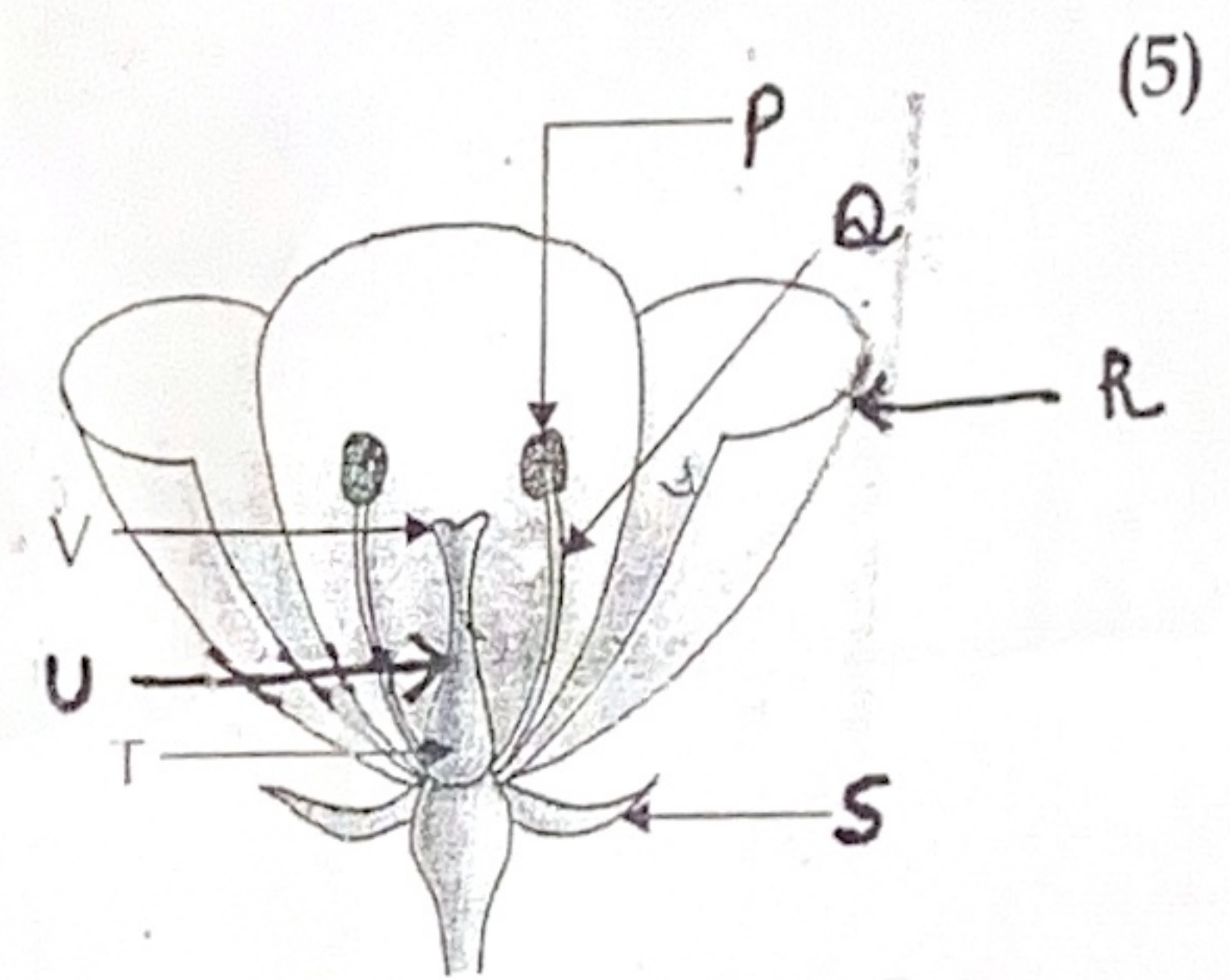
Q7. Activity Based Question:

To expel hot air out of the kitchen, 'A' has an exhaust fan fitted on the window of her kitchen and B has a similar exhaust fan fitted on the wall near the ceiling of her kitchen.

Answer the following questions based on the above activity:

- a) Which one of the exhaust fans expels hot air more effectively?
- b) Explain your answer with a suitable reason.
- c) What happens to air when it gets heated?

Q8. Figure Based Question:



- a) The flower given in the figure has both male and female reproductive parts. Which of the combinations form the pistil?
- b) Identify the male reproductive parts of the flower from this figure.
- c) Label P, R, S, Q, V, T (5)